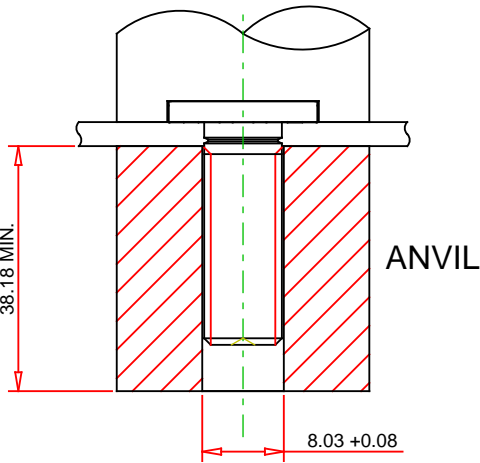
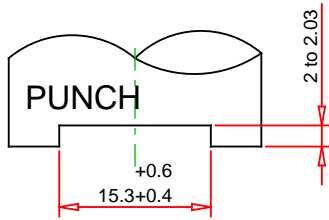
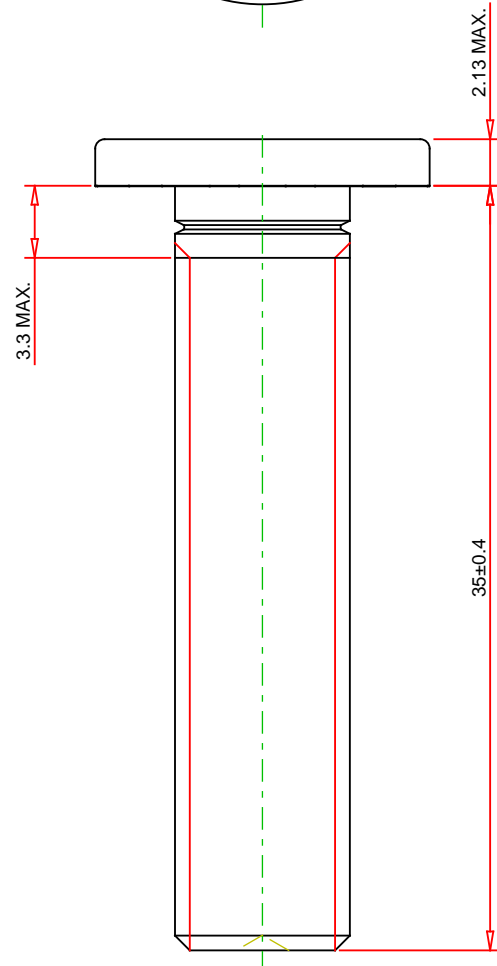
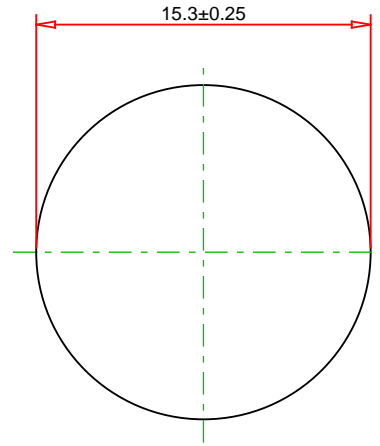
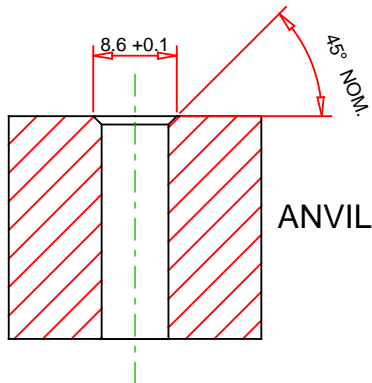


RECOMMENDED
INSTALLATION
TOOLING



TOOLING FOR SHEET THICKNESS LESS THAN 1.51 mm WITH M5
AND M6 THREAD SIZES AND LESS THAN 1.9 mm WITH M8 THREAD.




© 2019 PennEngineering

ALL DIMENSIONS IN MILLIMETERS

DATE 9-DEC-2019

NOTE : DRAWING NOT TO SCALE

THREAD : M8 x 1.25	MOUNTING HOLE DIA. : 8 +0.13
MATERIAL: STEEL	PANEL THICKNESS: 1.5 MINIMUM
HEAT TREAT: YES	MAX. PANEL HARDNESS: HRB 96 / HB 216
FINISH: ZINC PLATED PER ASTM B633, SC1 (5µm), TYPE III, COLORLESS	MIN CENTERLINE-TO-EDGE: 14.5
DESCRIPTION : TYPE HFLH HARD PANEL STUDS - METRIC	 PennEngineering®
PART NO. : HFLH-M8-35ZI	

EMAIL: TECHSUPPORT@PEMNET.COM
WWW.PEMNET.COM