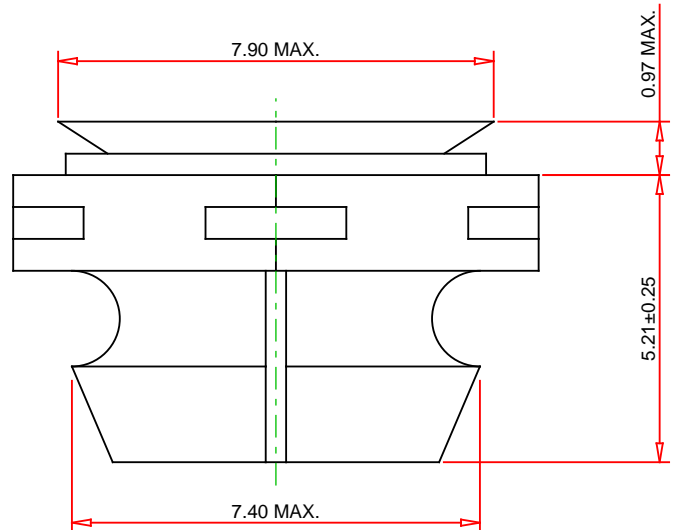
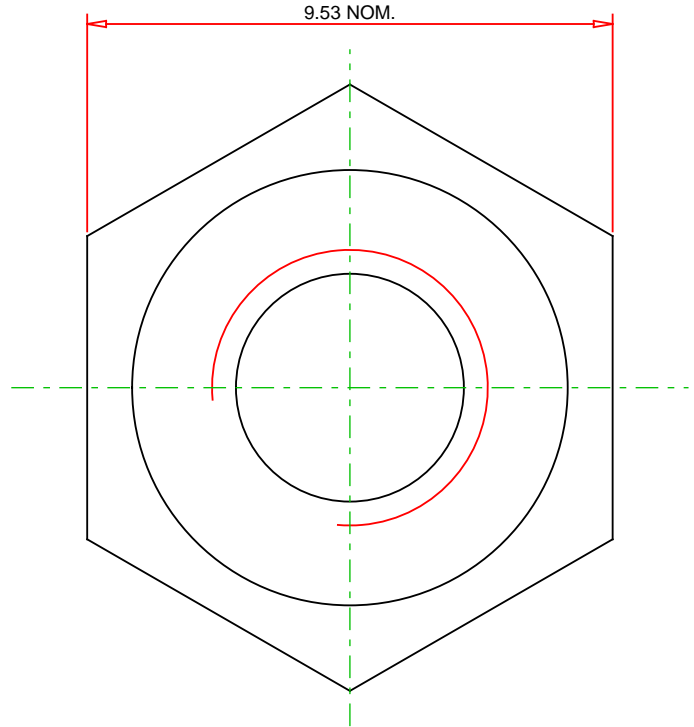
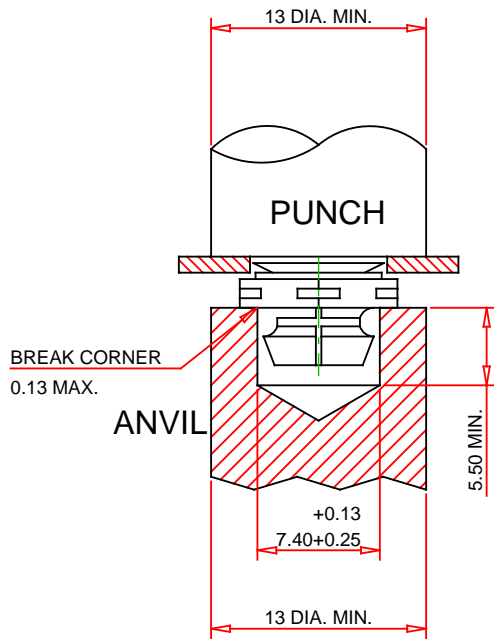


RECOMMENDED
INSTALLATION
TOOLING



© 2019 PennEngineering

ALL DIMENSIONS IN MILLIMETERS

DATE 4-DEC-2019

NOTE : DRAWING NOT TO SCALE

THREAD : M5 x 0.8	MOUNTING HOLE DIA. : 7.92 +0.08
MATERIAL: CARBON STEEL	PANEL THICKNESS: 1.00 MINIMUM
HEAT TREAT: YES	MAX. PANEL HARDNESS: HRB 70 / HB 125
FINISH: BLACK, DRY-FILM LUBRICANT OVER ZINC PHOSPHATE	MIN CENTERLINE-TO-EDGE: 5.6

DESCRIPTION :
PEMFLEX® SELF-LOCKING, SELF-CLINCHING FASTENERS -
TYPES LK, LKA, LKS - METRIC



PennEngineering®

PART NO. :
LK-M5-1MD

EMAIL: TECHSUPPORT@PEMNET.COM
WWW.PEMNET.COM