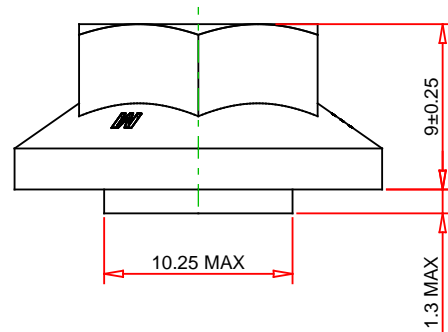
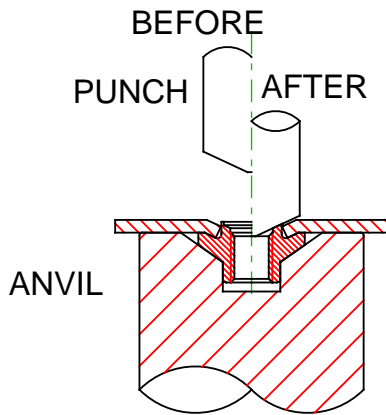
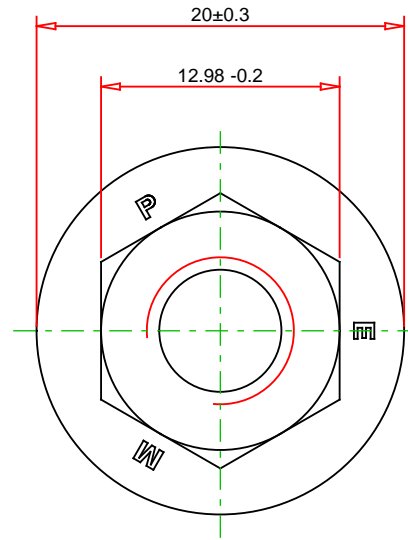
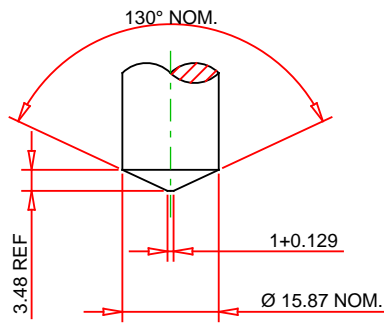
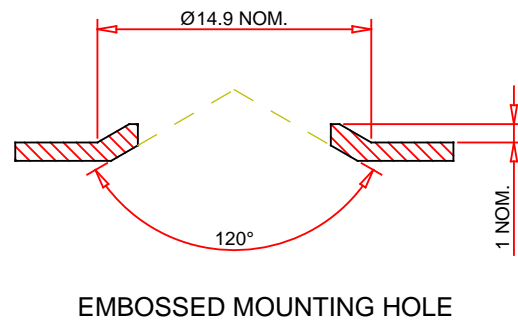
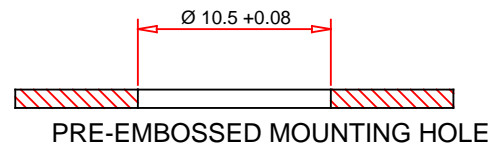
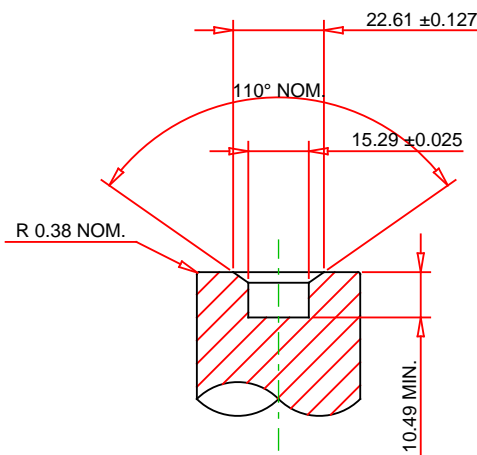


RECOMMENDED
INSTALLATION
TOOLING
PUNCH DETAIL



ANVIL DETAIL



© 2019 PennEngineering

ALL DIMENSIONS IN MILLIMETERS

DATE 5-DEC-2019

NOTE : DRAWING NOT TO SCALE

THREAD : M8 x 1.25

MOUNTING HOLE DIA. : 10.5 +0.08

MATERIAL: CARBON STEEL

PANEL THICKNESS: 1 ±0.1

HEAT TREAT: NONE

MAX. PANEL HARDNESS: ANY

FINISH: ZINC PLATED PER ASTM B633, SC1 (5µm),
TYPE III, COLORLESS

MIN CENTERLINE-TO-EDGE: NOT APPLICABLE

DESCRIPTION :
SPINNING FLARE NUT - TYPE SFN™ - METRIC



PennEngineering®

PART NO. :

EMAIL: TECHSUPPORT@PEMNET.COM

SFN-M8-00ZI

WWW.PEMNET.COM