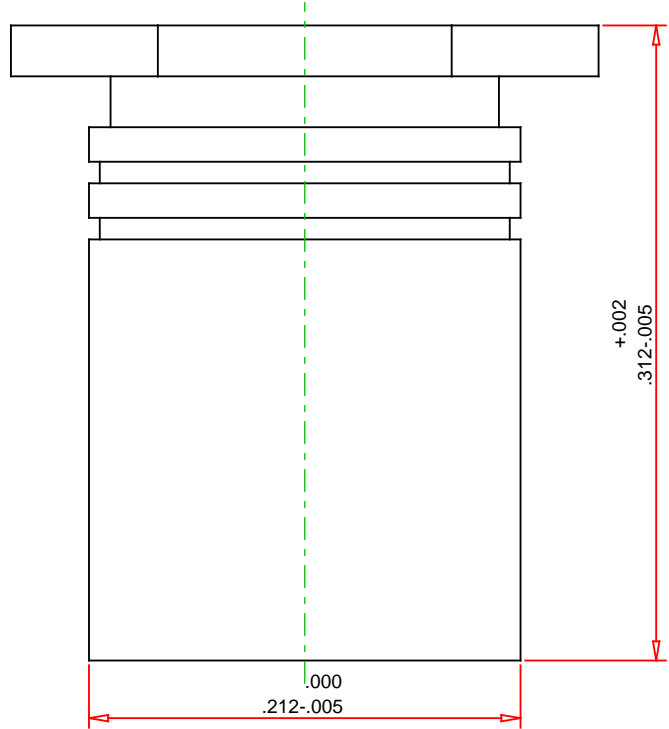
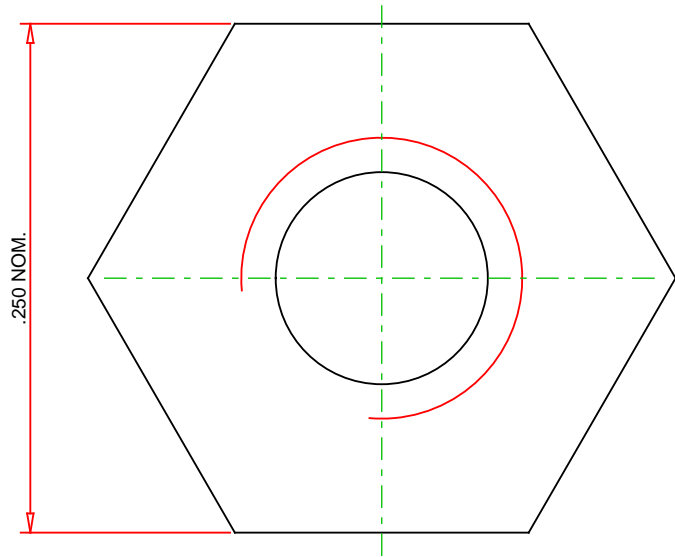
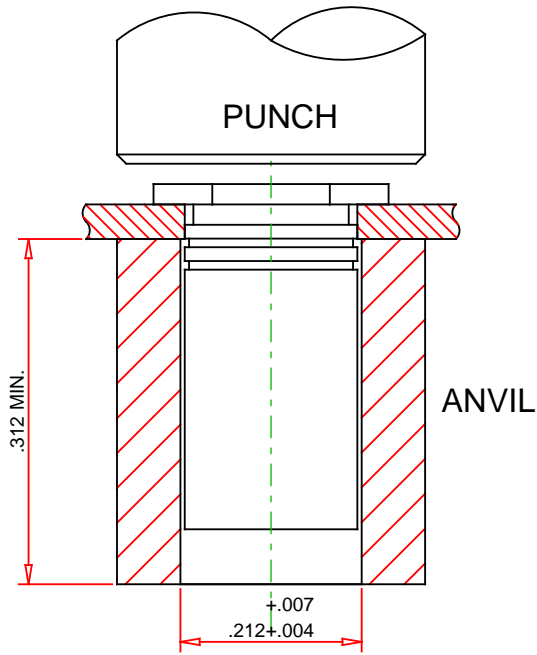


RECOMMENDED
INSTALLATION
TOOLING



© 2019 PennEngineering

ALL DIMENSIONS IN INCHES

DATE 2-DEC-2019

NOTE : DRAWING NOT TO SCALE

THREAD : .138-32 (#6-32)

MOUNTING HOLE DIA. : $.213^{+.003}_{-.000}$

MATERIAL: ALUMINUM

PANEL THICKNESS: .040 MINIMUM

HEAT TREAT: NONE

MAX. PANEL HARDNESS: HRB 50 / HB 82

FINISH: D

MIN CENTERLINE-TO-EDGE: 0.27

DESCRIPTION :

THRU-HOLE THREADED STANDOFFS - TYPES SO, SOA, SOS
- UNIFIED



PennEngineering®

PART NO. :

SOA-632-10

EMAIL: TECHSUPPORT@PEMNET.COM
WWW.PEMNET.COM