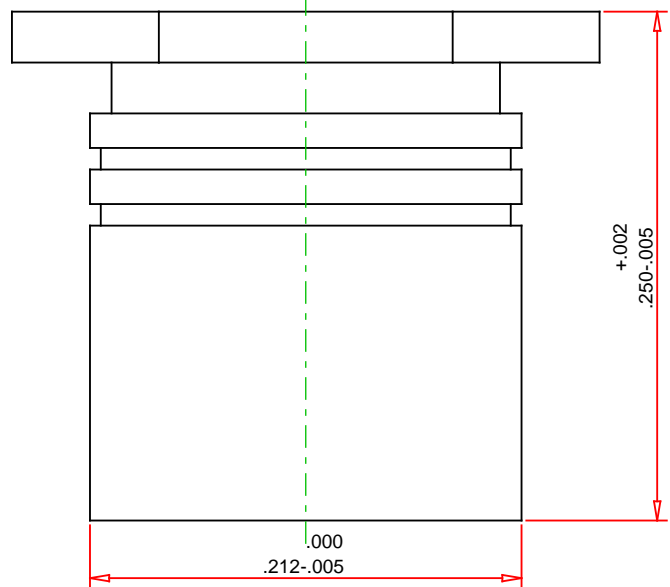
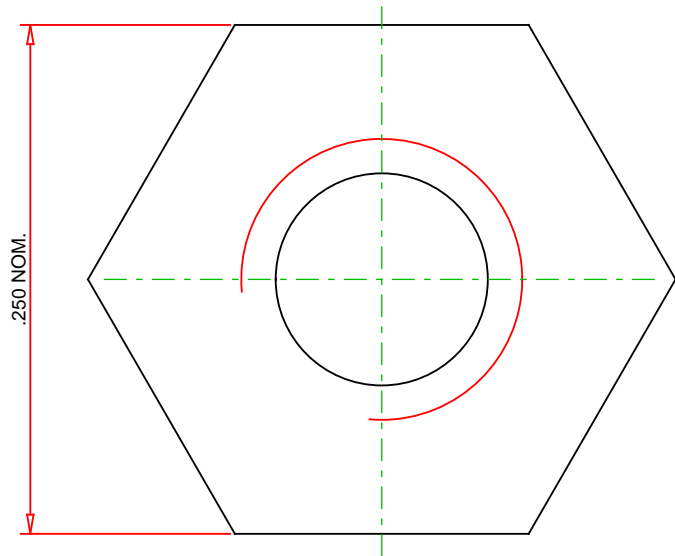
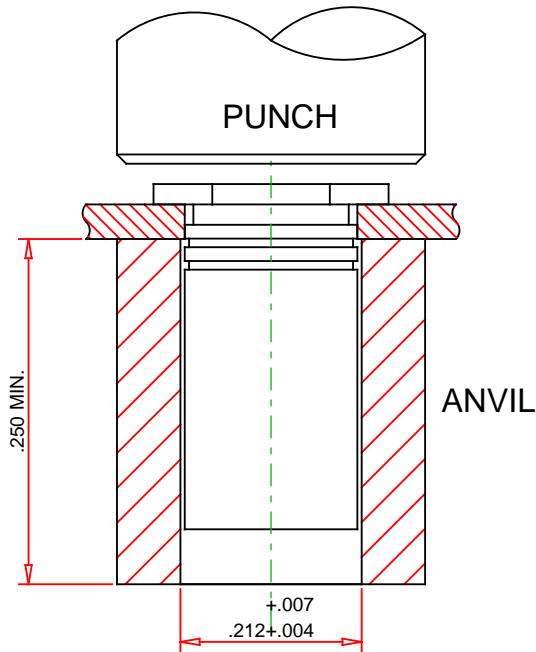


RECOMMENDED  
INSTALLATION  
TOOLING



© 2019 PennEngineering

ALL DIMENSIONS IN INCHES

DATE 2-DEC-2019

NOTE : DRAWING NOT TO SCALE

THREAD :	.138-32 (#6-32)	MOUNTING HOLE DIA. :	.213 $+.003$ $-.000$
MATERIAL:	ALUMINUM	PANEL THICKNESS:	.040 MINIMUM
HEAT TREAT:	NONE	MAX. PANEL HARDNESS:	HRB 50 / HB 82
FINISH:	D	MIN CENTERLINE-TO-EDGE:	0.27
DESCRIPTION :	THRU-HOLE THREADED STANDOFFS - TYPES SO, SOA, SOS - UNIFIED		
PART NO. :	SOA-632-8		



PennEngineering®

EMAIL: TECHSUPPORT@PEMNET.COM  
WWW.PEMNET.COM